

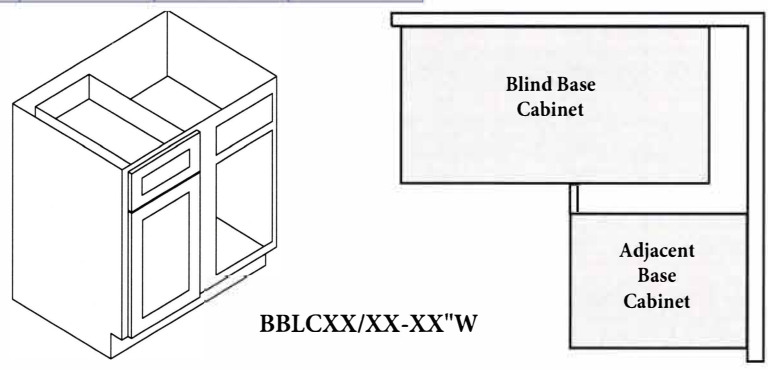
# Spec Sheets Base Cabinets

## Base Blind Corner Cabinets

Item#	Width	Height	Depth	Door	Drawer	Shelf
BBLC39/42-36"W	36"	34-1/2"	24"	1	1	1
BBLC42/45-39"W	39"	34-1/2"	24"	1	1	1
BBLC45/48-42"W	42"	34-1/2"	24"	1	1	1

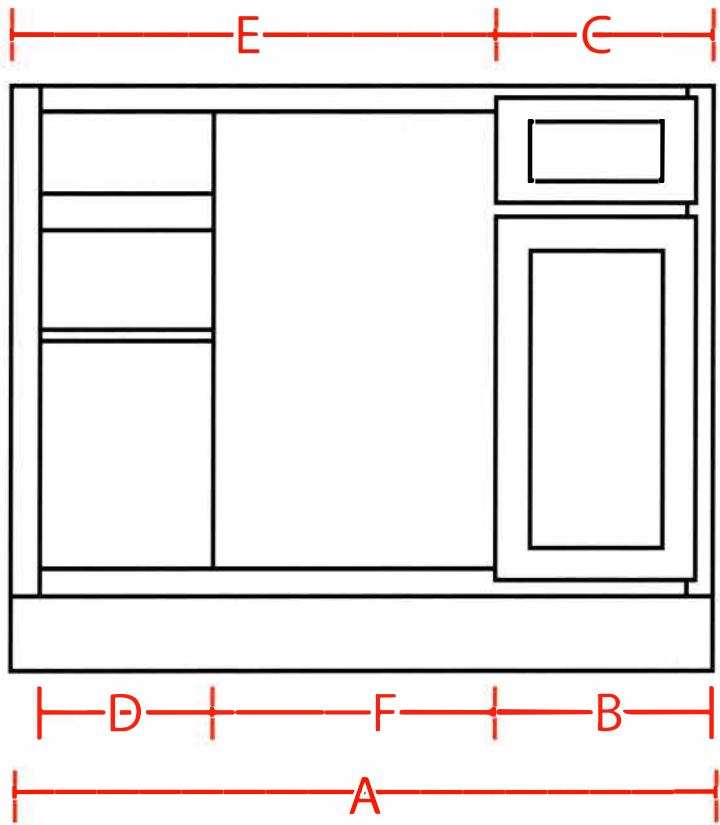
### BBLC39/42-36"W

Min Pull	39"W
Max Pull	42"W
Dimension	Measurements
A	36"
B	11-3/4"
C	11-9/16"
D	8-7/8"
E	24-1/4"
F	13-3/4"



### BBLC42/45-39"W

Min Pull	42"W
Max Pull	45"W
Dimension	Measurements
A	39"
B	14-3/4"
C	14-9/16"
D	11-7/8"
E	24-1/4"
F	10-3/4"

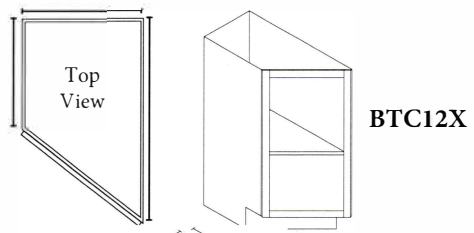


### BBLC45/48-42"W

Min Pull	45"
Max Pull	48"
Dimension	Measurements
A	42"
B	17-3/4"
C	17-1/2"
D	14-7/8"
E	24-1/4"
F	7-3/4"

## Base Transitional Cabinet

Item#	Width	Height	Depth	Door	Drawer	Shelf
BTC12R	12"	34-1/2"	24" to 12"	1	0	1
BTC12L	12"	34-1/2"	12" to 24"	1	0	1



## Angle Base Door Size 17-7/8. Both doors are functional.

Item#	Width	Height	Depth	Door	Drawer	Shelf
AB24 (Base)	24"	34-1/2"	24"	2	0	1

